

R&D | ENGINEERING | INDUSTRIAL

# Industrial/Flex Suites for Lease

200 Mason Cir., Suite A, Concord, CA 94520



# R&D | ENGINEERING | INDUSTRIAL

## Industrial/Flex Suites for Lease

200 Mason Cir., Suite A, Concord, CA 94520

### AVAILABLE

**Suite A:** ±4,800 RSF

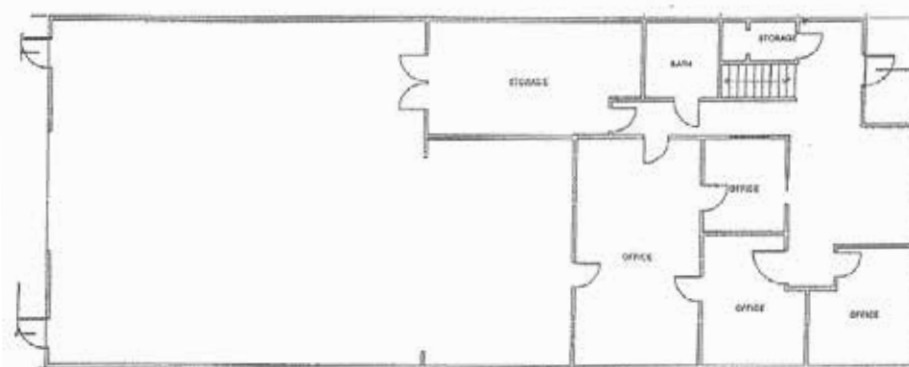
**Lease Rate:** \$1.40 PSF/Mo., IG

### PROPERTY HIGHLIGHTS

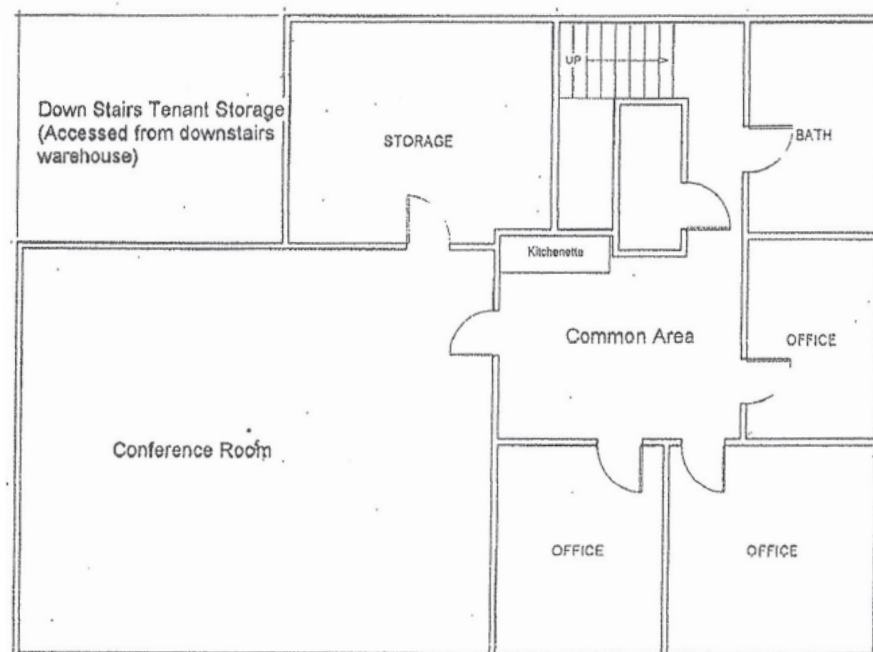
- **Leasing Promotion:** One month rent abatement per year for leases 3-5 years (with good financials)

No rent on 2nd floor area for the first 12 months of the initial lease term

- One (1) grade-level roll-up door (14' x 14')
- 18' clear height
- Extensive office build-out, ideal for engineering firms, R&D companies, and contractors.
- Easy access to Hwy 4
- Zoned Light Industrial



First Floor



Second Floor

R&D | ENGINEERING | INDUSTRIAL

# Industrial/Flex Suites for Lease

200 Mason Cir., Suite C, Concord, CA 94520



# R&D | ENGINEERING | INDUSTRIAL

## Industrial/Flex Suites for Lease

200 Mason Cir., Suite C, Concord, CA 94520

### AVAILABLE

Suite C: ±4,590 RSF

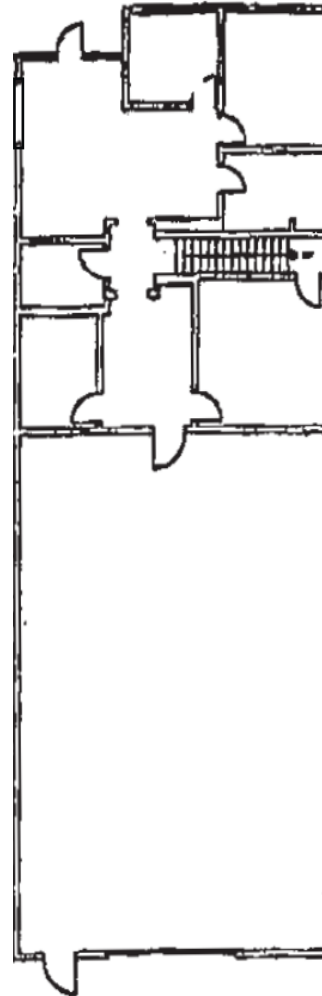
Lease Rate: \$1.40 PSF/Mo., IG

### PROPERTY HIGHLIGHTS

- Leasing Promotion: One month rent abatement per year for leases 3-5 years (with good financials)
- One (1) grade-level roll-up door (14' x 14')
- 18' clear height
- Extensive office build-out, ideal for engineering firms, R&D companies, and contractors.
- Easy access to Hwy 4

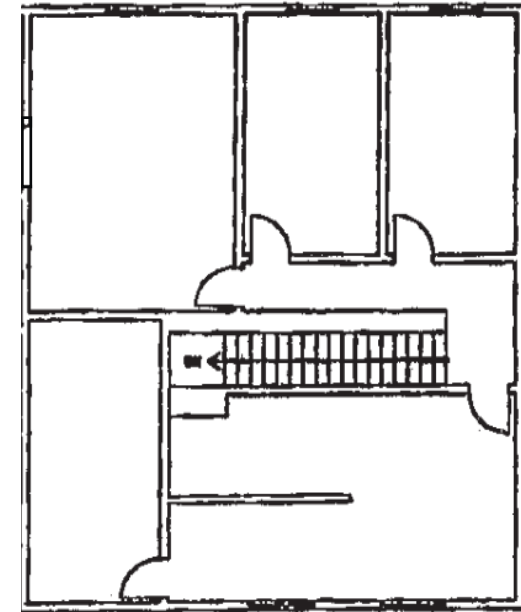


Suite C



First Floor

Suite C



Second Floor

R&D | ENGINEERING | INDUSTRIAL

# Industrial/Flex Suites for Lease

200 Mason Cir., Suite D, Concord, CA 94520



# Industrial/Flex Suites for Lease

200 Mason Cir., Suite D, Concord, CA 94520

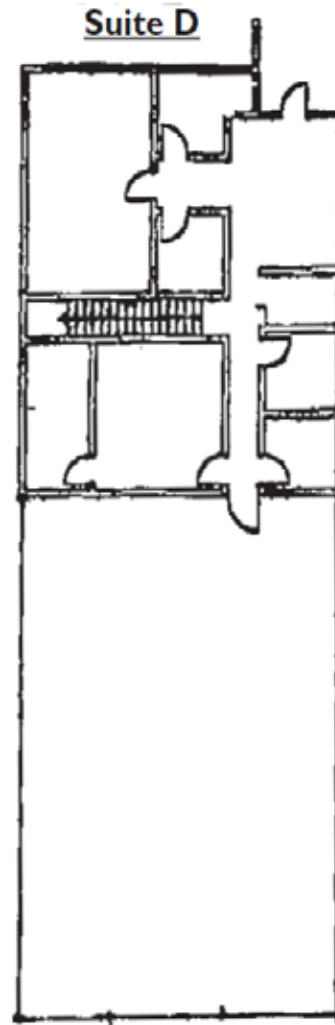
## AVAILABLE

Suite D: ±4,000 RSF

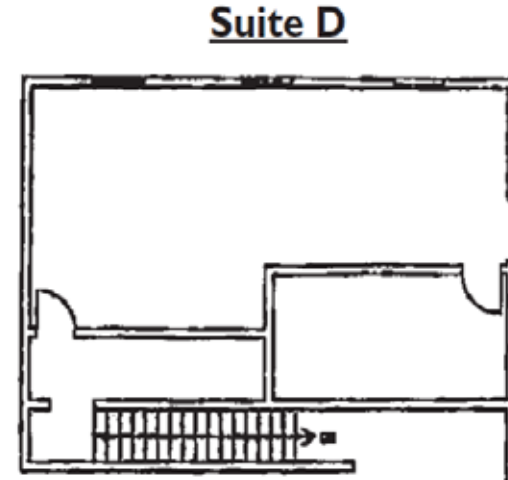
Lease Rate: \$1.40 PSF/Mo., IG

## PROPERTY HIGHLIGHTS

- Leasing Promotion: One month rent abatement per year for leases 3-5 years (with good financials)
- One (1) grade-level roll-up door (14' x 14')
- 18' clear height
- Extensive office build-out, ideal for engineering firms, R&D companies, and contractors.
- Easy access to Hwy 4



First Floor



Second Floor